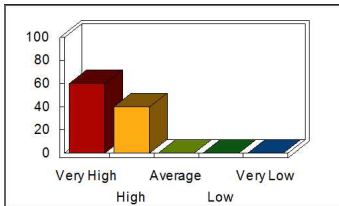


# Trinity Valley Community College

## ADN Employer Evaluation Report

Spring 2013

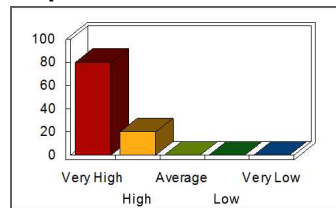
1. This graduate functions within the nurse's legal scope of practice and in accordance with the policies and procedures of the employing health care institution or practice setting.



Mean: 4.60

Response	Percent
Very High	60.00
High	40.00
Average	0.00
Low	0.00
Very Low	0.00

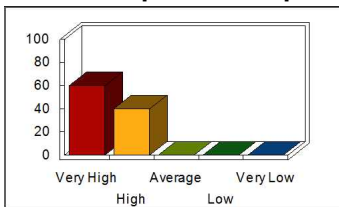
2. This graduate assumes responsibility and accountability for the quality of nursing care provided to patients and their families.



Mean: 4.80

Response	Percent
Very High	80.00
High	20.00
Average	0.00
Low	0.00
Very Low	0.00

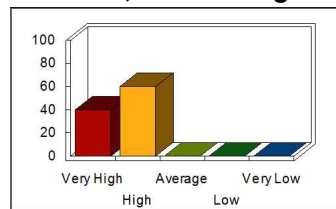
3. This graduate participates in activities that promote the development and practice of professional nursing.



Mean: 4.60

Response	Percent
Very High	60.00
High	40.00
Average	0.00
Low	0.00
Very Low	0.00

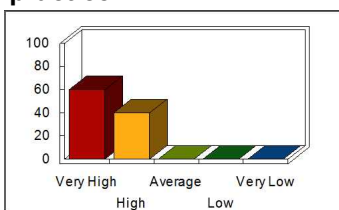
4. This graduate demonstrates responsibility for continued competence in nursing practice, and develops insight through reflection, self-analysis, self-care, and lifelong learning.



Mean: 4.40

Response	Percent
Very High	40.00
High	60.00
Average	0.00
Low	0.00
Very Low	0.00

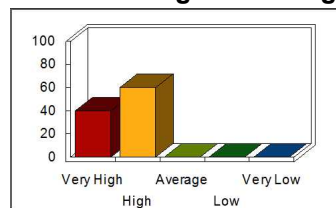
5. This graduate uses clinical reasoning and knowledge based on the diploma or associate degree nursing program of study and evidence-based practice outcomes as a basis for decision making in nursing practice.



Mean: 4.60

Response	Percent
Very High	60.00
High	40.00
Average	0.00
Low	0.00
Very Low	0.00

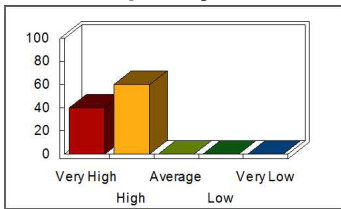
6. This graduate determines the physical and mental health status, needs, and preferences of culturally, ethnically, and socially diverse patients and their families based upon interpretation of comprehensive health assessment findings compared with evidence-based health data derived from the diploma or associate degree nursing program of study.



Mean: 4.40

Response	Percent
Very High	40.00
High	60.00
Average	0.00
Low	0.00
Very Low	0.00

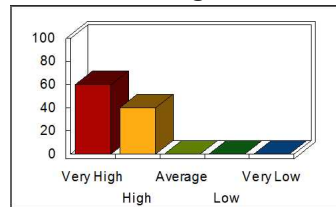
7. This graduate analyzes assessment data to identify problems, formulate goals/ outcomes, and develop plans of care for patients and their families using information from evidence-based practice in collaboration with patients, their families, and the interdisciplinary health care team.



Mean: 4.40

Response	Percent
Very High	40.00
High	60.00
Average	0.00
Low	0.00
Very Low	0.00

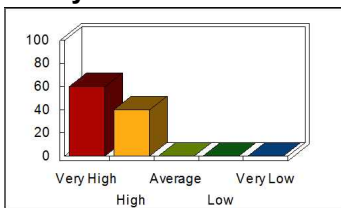
8. This graduate provides safe, compassionate, comprehensive nursing care to patients and their families through a broad array of health care services.



Mean: 4.60

Response	Percent
Very High	60.00
High	40.00
Average	0.00
Low	0.00
Very Low	0.00

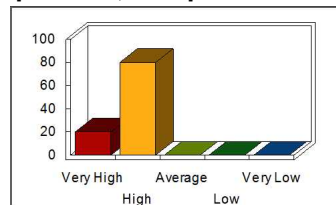
9. This graduate implements the plan of care for patients and their families within legal, ethical, and regulatory parameters and in consideration of disease prevention, wellness, and promotion of healthy lifestyles.



Mean: 4.60

Response	Percent
Very High	60.00
High	40.00
Average	0.00
Low	0.00
Very Low	0.00

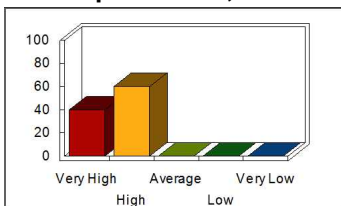
10. This graduate evaluates and report patient outcomes and responses to therapeutic interventions in comparison to benchmarks from evidence-based practice, and plan follow-up nursing care.



Mean: 4.20

Response	Percent
Very High	20.00
High	80.00
Average	0.00
Low	0.00
Very Low	0.00

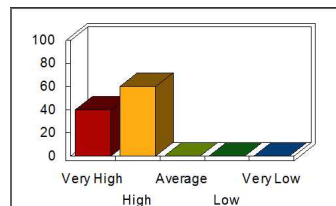
11. This graduate develops, implements, and evaluates teaching plans for patients and their families to address health promotion, maintenance, and restoration.



Mean: 4.40

Response	Percent
Very High	40.00
High	60.00
Average	0.00
Low	0.00
Very Low	0.00

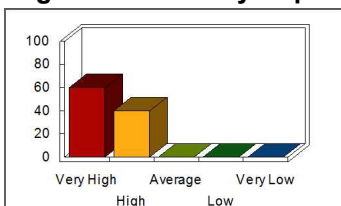
12. This graduate coordinates human, information, and materiel resources in providing care for patients and their families.



Mean: 4.40

Response	Percent
Very High	40.00
High	60.00
Average	0.00
Low	0.00
Very Low	0.00

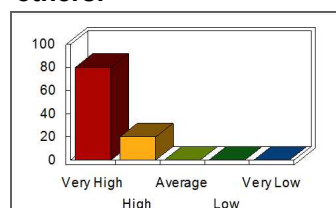
13. This graduate demonstrates knowledge of the Texas Nursing Practice Act and the Texas Board of Nursing Rules that emphasize safety, as well as all federal, state, and local government and accreditation organization safety requirements and standards.



Mean: 4.60

Response	Percent
Very High	60.00
High	40.00
Average	0.00
Low	0.00
Very Low	0.00

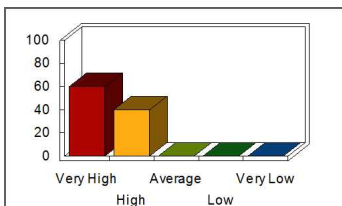
14. This graduate implements measures to promote quality and a safe environment for patients, self, and others.



Mean: 4.80

Response	Percent
Very High	80.00
High	20.00
Average	0.00
Low	0.00
Very Low	0.00

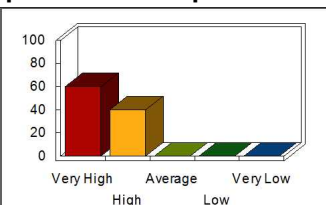
**15. This graduate formulates goals and outcomes using evidence-based data to reduce patient risks.**



Mean: 4.60

Response	Percent
Very High	60.00
High	40.00
Average	0.00
Low	0.00
Very Low	0.00

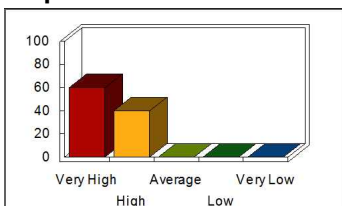
**16. This graduate obtains instruction, supervision, or training as needed when implementing nursing procedures or practices.**



Mean: 4.60

Response	Percent
Very High	60.00
High	40.00
Average	0.00
Low	0.00
Very Low	0.00

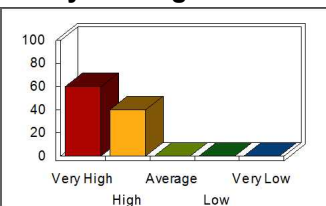
**17. This graduate complies with mandatory reporting requirements of the Texas Nursing Practice Act.**



Mean: 4.60

Response	Percent
Very High	60.00
High	40.00
Average	0.00
Low	0.00
Very Low	0.00

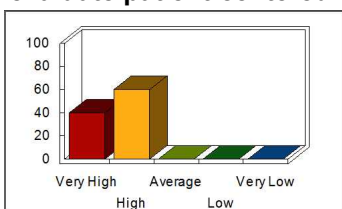
**18. This graduate accepts and makes assignments and delegate tasks that take into consideration patient safety and organizational policy.**



Mean: 4.60

Response	Percent
Very High	60.00
High	40.00
Average	0.00
Low	0.00
Very Low	0.00

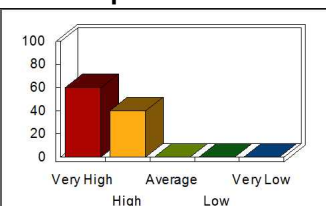
**19. This graduate coordinates, collaborates, and communicates with patients, their families, and the interdisciplinary health care team to plan, deliver, and evaluate patient-centered care.**



Mean: 4.40

Response	Percent
Very High	40.00
High	60.00
Average	0.00
Low	0.00
Very Low	0.00

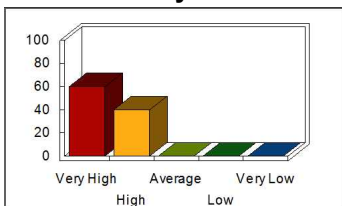
**20. This graduate serves as a health care advocate in monitoring and promoting quality and access to health care for patients and their families.**



Mean: 4.60

Response	Percent
Very High	60.00
High	40.00
Average	0.00
Low	0.00
Very Low	0.00

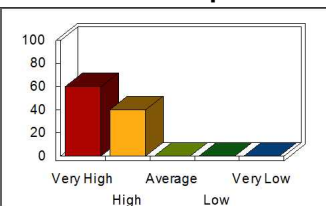
**21. This graduate refers patients and their families to resources that facilitate continuity of care; health promotion, maintenance, and restoration; and ensure confidentiality.**



Mean: 4.60

Response	Percent
Very High	60.00
High	40.00
Average	0.00
Low	0.00
Very Low	0.00

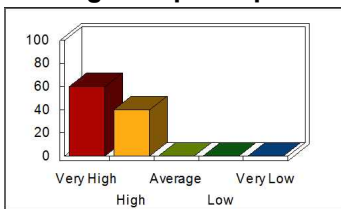
**22. This graduate communicates and collaborates in a timely manner with members of the interdisciplinary health care team to promote and maintain optimal health status of patients and their families.**



Mean: 4.60

Response	Percent
Very High	60.00
High	40.00
Average	0.00
Low	0.00
Very Low	0.00

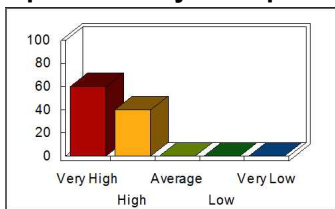
**23. This graduate communicates and manages information using technology to support decision making to improve patient care.**



Mean: 4.60

Response	Percent
Very High	60.00
High	40.00
Average	0.00
Low	0.00
Very Low	0.00

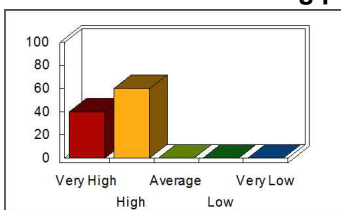
**24. This graduate assigns and/ or delegates nursing care to other members of the health care team based upon an analysis of patient or unit need.**



Mean: 4.60

Response	Percent
Very High	60.00
High	40.00
Average	0.00
Low	0.00
Very Low	0.00

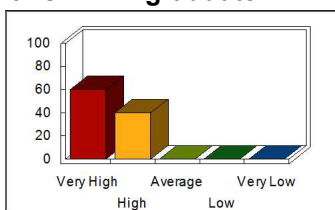
**25. This graduate supervises nursing care provided by others for whom the nurse is responsible by using evidence-based nursing practice.**



Mean: 4.40

Response	Percent
Very High	40.00
High	60.00
Average	0.00
Low	0.00
Very Low	0.00

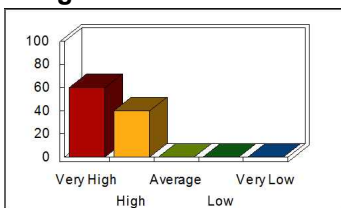
**26. What is your overall rating of the job performance of this TVCC graduate?**



Mean: 4.60

Response	Percent
Very High	60.00
High	40.00
Average	0.00
Low	0.00
Very Low	0.00

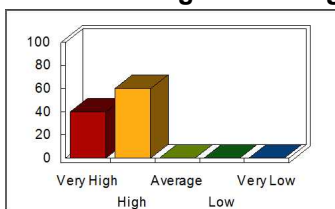
**27. This graduate demonstrates knowledge of course content that is appropriate to the role expectations of the graduate.**



Mean: 4.60

Response	Percent
Very High	60.00
High	40.00
Average	0.00
Low	0.00
Very Low	0.00

**28. Overall, how satisfied are you with the TVCC Associate Degree Nursing Program?**



Mean: 4.40

Response	Percent
Very High	40.00
High	60.00
Average	0.00
Low	0.00
Very Low	0.00