

Fall Distance Education and Dual Credit Enrollment 2013-2018

Distance Education Enrollment by Student (Unduplicated)						
Distance Education Type	Year					
	2013	2014	2015	2016	2017	2018
Internet	1763	1843	1889	2011	2201	2335
Interactive TV	262	264	384	259	200	340
Hybrid >50% Distance	73	47	31	44	13	18
Hybrid <50% Distance	65	87	118	100	164	167

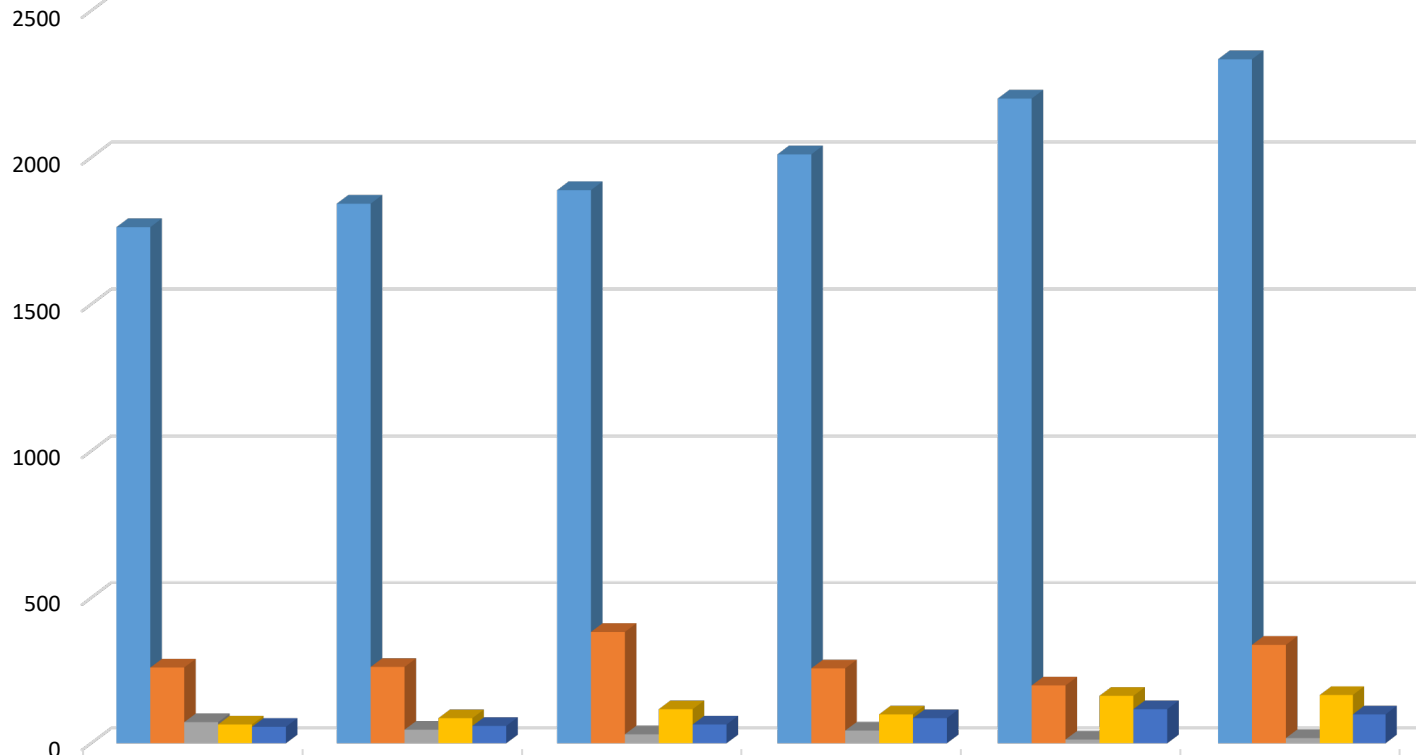
Distance Education Enrollment by Section (Duplicated-Same student enrolled in multiple sections)						
Distance Education Type	Year					
	2013	2014	2015	2016	2017	2018
Internet	5901	6402	6390	6816	7356	7947
Interactive TV	644	994	1184	970	805	970
Hybrid >50% Distance	189	121	83	93	36	47
Hybrid <50% Distance	243	296	327	259	409	481

High School Enrollment						
Enrollment Type	Year					
	2013	2014	2015	2016	2017	2018
Unduplicated Dual Credit Enrollment	1352	1410	1694	1899	1797	2079
Duplicated Dual Credit Enrollment	2459	2629	3409	3971	4059	4500
Unduplicated High School Enrollment for College Credit Only	15	10	8	10	3	20
Duplicated High School Enrollment for College Credit Only	28	19	15	23	11	76

State definition of Fall semester which includes mini semesters falling within the tradiional fall term

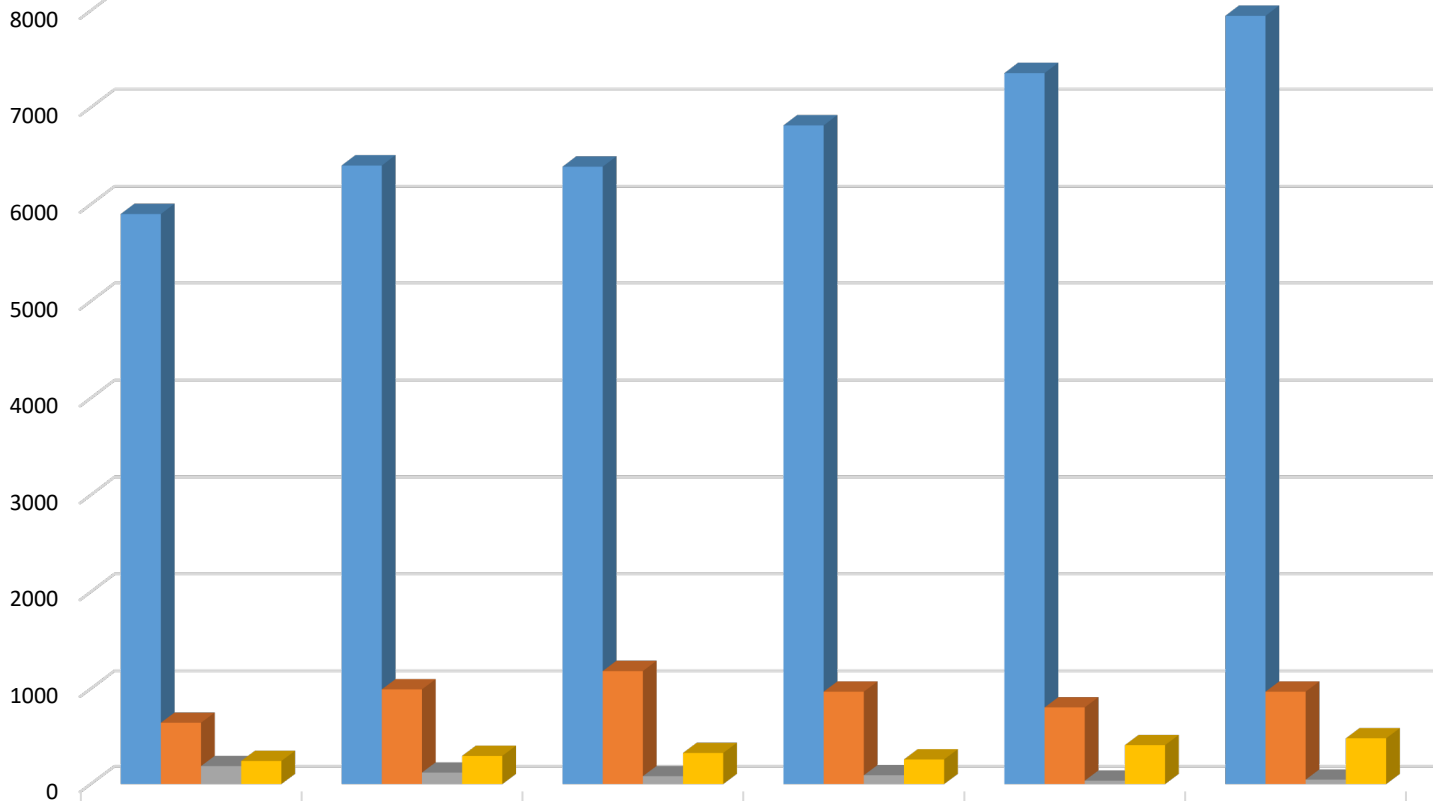
Trinity Valley Community College does not discriminate on the basis of race, color, national origin, sex, disability or age in its programs or activities. For questions or concerns regarding discrimination based a disability, contact: ADA/Section 504 Coordinator, 100 Cardinal Drive, Athens, TX 75751, 903-675-6224, disability@tvcc.edu. For all other questions or concerns regarding discrimination, contact: Director of Human Resources/Title IX Coordinator, 100 Cardinal Drive, Athens, TX 75751, 903-675-6215, humanresources@tvcc.edu.

TVCC Distance Enrollment by Student (Unduplicated)



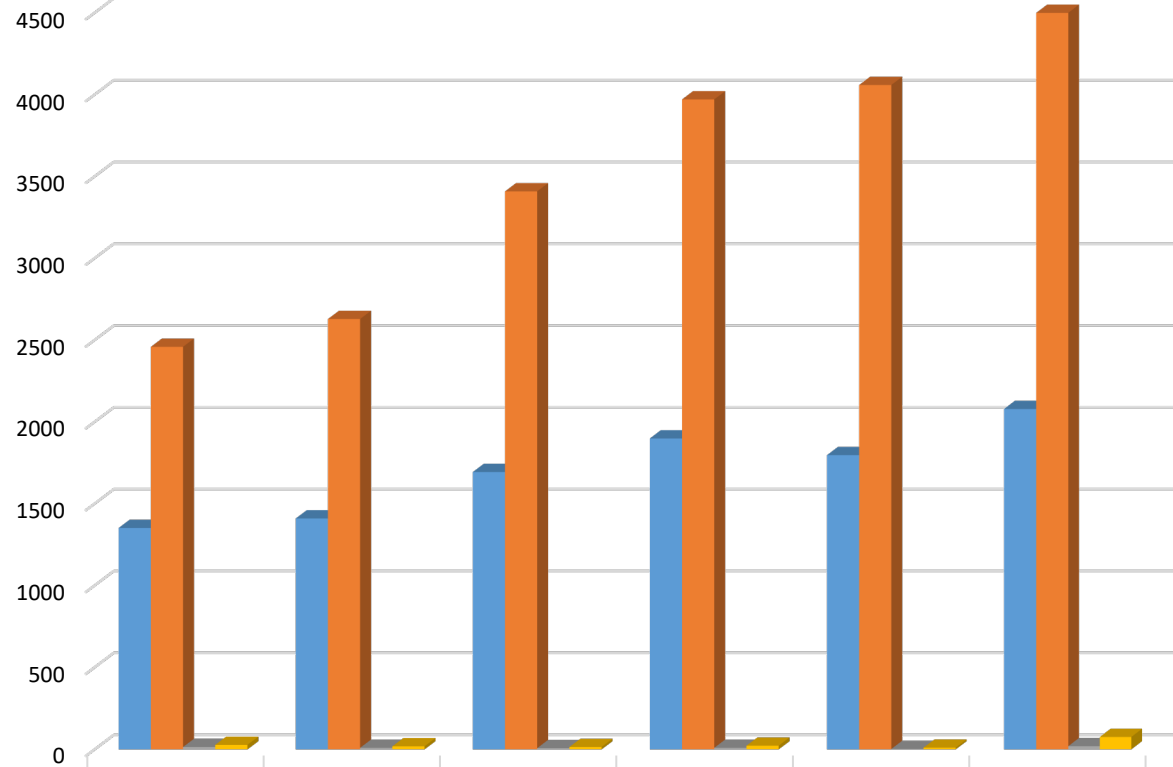
	2013	2014	2015	2016	2017	2018
Internet	1763	1843	1889	2011	2201	2335
Interactive TV	262	264	384	259	200	340
Hybrid >50% Distance	73	47	31	44	13	18
Hybrid <50% Distance	65	87	118	100	164	167
Hybrid <50% Distance	57	60	65	87	118	100

TVCC Distance Education Enrollment by Section (Duplicated)



	2013	2014	2015	2016	2017	2018
Internet	5901	6402	6390	6816	7356	7947
Interactive TV	644	994	1184	970	805	970
Hybrid >50% Distance	189	121	83	93	36	47
Hybrid <50% Distance	243	296	327	259	409	481

TVCC Fall Semester High School Enrollment



	2013	2014	2015	2016	2017	2018
■ Unduplicated Dual Credit Enrollment	1352	1410	1694	1899	1797	2079
■ Duplicated Dual Credit Enrollment	2459	2629	3409	3971	4059	4500
■ Unduplicated High School Enrollment for College Credit Only	15	10	8	10	3	20
■ Duplicated High School Enrollment for College Credit Only	28	19	15	23	11	76