

ETS Test Results
Spring 2016

High School Classes

ETS® Proficiency Profile

Summary of Scaled Scores

To show the ability of the group taking the test

Trinity Valley Community College

Number of students tested: 93

Number of students included in these statistics: 93

Number of students excluded (see roster): 0

| | Possible Range | Mean Score | 95% Confidence Limits* for Mean | Standard Deviation | 25th Percentile | 50th Percentile | 75th Percentile |
|---------------------------------|----------------|------------|---------------------------------|--------------------|-----------------|-----------------|-----------------|
| Total Score | 400 to 500 | 446.41 | 444 to 449 | 18.11 | 433 | 447 | 459 |
| Skills Subscores: | | | | | | | |
| Critical Thinking | 100 to 130 | 111.76 | 110 to 113 | 5.8 | 107 | 112 | 116 |
| Reading | 100 to 130 | 118.3 | 117 to 120 | 6.61 | 114 | 120 | 123 |
| Writing | 100 to 130 | 114.85 | 114 to 116 | 5.14 | 112 | 115 | 119 |
| Mathematics | 100 to 130 | 113.86 | 113 to 115 | 4.9 | 110 | 113 | 116 |
| Context-Based Subscores: | | | | | | | |
| Humanities | 100 to 130 | 113.85 | 112 to 115 | 6.76 | 110 | 112 | 117 |
| Social Sciences | 100 to 130 | 113.2 | 112 to 115 | 5.67 | 109 | 113 | 118 |
| Natural Sciences | 100 to 130 | 116.13 | 115 to 118 | 5.5 | 112 | 116 | 120 |

*The confidence limits are based on the assumption that the questions contributing to each scaled score are a sample from a much larger set of possible questions that could have been used to measure those same skills. If the group of students taking the test is a sample from some larger population of students eligible to be tested, the confidence limits include both sampling of students and sampling of questions as factors that could cause the mean score to vary. The confidence limits indicate the precision of the mean score of the students actually tested, as an estimate of the "true population mean" - the mean score that would result if all the students in the population could somehow be tested with all possible questions. These confidence limits were computed by a procedure that has a 95 percent probability of producing upper and lower limits that will surround the true population mean. The population size used in the calculation of the confidence limits for the mean scores in this report is 93.

Reports based on a sample of fewer than 50 test takers are representative of the performance of **that sample only**. Reports based on **fewer than 50 test takers** should not be considered representative of the larger group of like students, and inferences or generalizations about the larger population or subgroup **should not** be made based on such small samples.

All College Student Classes

ETS® Proficiency Profile

Summary of Scaled Scores

To show the ability of the group taking the test

Trinity Valley Community College

Number of students tested: 237

Number of students included in these statistics: 235

Number of students excluded (see roster): 2

| | Possible Range | Mean Score | 95% Confidence Limits* for Mean | Standard Deviation | 25th Percentile | 50th Percentile | 75th Percentile |
|---------------------------------|----------------|------------|---------------------------------|--------------------|-----------------|-----------------|-----------------|
| Total Score | 400 to 500 | 436.71 | 435 to 438 | 17.49 | 422 | 436 | 447 |
| Skills Subscores: | | | | | | | |
| Critical Thinking | 100 to 130 | 109.13 | 108 to 110 | 5.33 | 105 | 109 | 112 |
| Reading | 100 to 130 | 115.45 | 114 to 117 | 7.23 | 110 | 115 | 123 |
| Writing | 100 to 130 | 112.49 | 112 to 113 | 4.82 | 109 | 112 | 115 |
| Mathematics | 100 to 130 | 112.46 | 111 to 113 | 5.25 | 109 | 111 | 116 |
| Context-Based Subscores: | | | | | | | |
| Humanities | 100 to 130 | 111.51 | 110 to 113 | 6.4 | 107 | 111 | 115 |
| Social Sciences | 100 to 130 | 111.62 | 111 to 113 | 5.69 | 106 | 110 | 114 |
| Natural Sciences | 100 to 130 | 113.48 | 112 to 115 | 5.94 | 108 | 114 | 119 |

*The confidence limits are based on the assumption that the questions contributing to each scaled score are a sample from a much larger set of possible questions that could have been used to measure those same skills. If the group of students taking the test is a sample from some larger population of students eligible to be tested, the confidence limits include both sampling of students and sampling of questions as factors that could cause the mean score to vary. The confidence limits indicate the precision of the mean score of the students actually tested, as an estimate of the "true population mean" - the mean score that would result if all the students in the population could somehow be tested with all possible questions. These confidence limits were computed by a procedure that has a 95 percent probability of producing upper and lower limits that will surround the true population mean. The population size used in the calculation of the confidence limits for the mean scores in this report is 235.

Reports based on a sample of fewer than 50 test takers are representative of the performance of **that sample only**. Reports based on **fewer than 50 test takers** should not be considered representative of the larger group of like students, and inferences or generalizations about the larger population or subgroup **should not** be made based on such small samples.

High School Classes

ETS® Proficiency Profile

Summary of Scaled Scores

To show the ability of the group taking the test

All College Student Classes

ETS® Proficiency Profile

Summary of Scaled Scores

To show the ability of the group taking the test

Trinity Valley Community College

| | Possible Range | Fall 2015 | Spring 2015 | Fall to Spring Change | Fall to Spring % Change | Fall 2015 | Spring 2015 | Fall to Spring Change | Fall to Spring % Change |
|---------------------------------|----------------|------------|-------------|-----------------------|-------------------------|------------|-------------|-----------------------|-------------------------|
| | | Mean Score | Mean Score | | | Mean Score | Mean Score | | |
| Total Score | 400 to 500 | 440.26 | 446.41 | 6.15 | 1.40% | 430.78 | 436.71 | 5.93 | 1.38% |
| Skills Subscores: | | | | | | | | | |
| Critical Thinking | 100 to 130 | 109.11 | 111.76 | 2.65 | 2.43% | 107.75 | 109.13 | 1.38 | 1.28% |
| Reading | 100 to 130 | 115.94 | 118.3 | 2.36 | 2.04% | 114.2 | 115.45 | 1.25 | 1.09% |
| Writing | 100 to 130 | 114.17 | 114.85 | 0.68 | 0.60% | 111.64 | 112.49 | 0.85 | 0.76% |
| Mathematics | 100 to 130 | 113.52 | 113.86 | 0.34 | 0.30% | 110.26 | 112.46 | 2.2 | 2.00% |
| Context-Based Subscores: | | | | | | | | | |
| Humanities | 100 to 130 | 110.2 | 113.85 | 3.65 | 3.31% | 110.61 | 111.51 | 0.9 | 0.81% |
| Social Sciences | 100 to 130 | 112.58 | 113.2 | 0.62 | 0.55% | 110.28 | 111.62 | 1.34 | 1.22% |
| Natural Sciences | 100 to 130 | 114.24 | 116.13 | 1.89 | 1.65% | 112.26 | 113.48 | 1.22 | 1.09% |

High School Classes

ETS® Proficiency Profile

Summary of Proficiency Classifications

To show how many students are proficient at each level

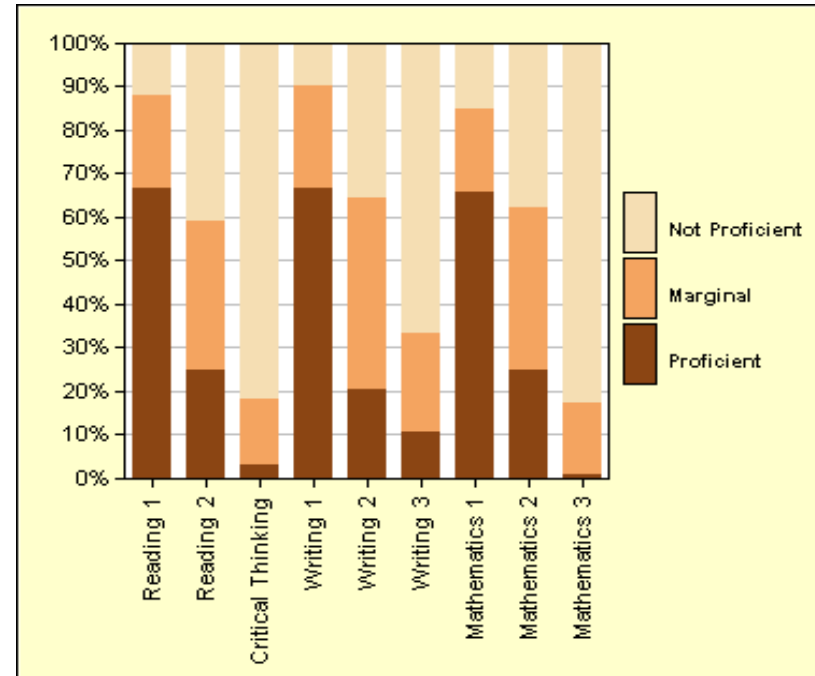
Trinity Valley Community College

Number of students tested: 93

Number of students included in these statistics: 93

Number of students excluded (see roster): 0

| Skill Dimension | Proficiency Classification | | |
|-----------------------------|----------------------------|----------|----------------|
| | Proficient | Marginal | Not Proficient |
| Reading, Level 1 | 67% | 22% | 12% |
| Reading, Level 2 | 25% | 34% | 41% |
| Critical Thinking | 3% | 15% | 82% |
| | | | |
| Writing, Level 1 | 67% | 24% | 10% |
| Writing, Level 2 | 20% | 44% | 35% |
| Writing, Level 3 | 11% | 23% | 67% |
| | | | |
| Mathematics, Level 1 | 66% | 19% | 15% |
| Mathematics, Level 2 | 25% | 38% | 38% |
| Mathematics, Level 3 | 1% | 16% | 83% |



The skills measured by the ETS® Proficiency Profile test are grouped into proficiency levels - three proficiency levels for writing, three for mathematics, and three for the combined set of skills involved in reading and critical thinking. The table and graph show the number and percentage of students who are proficient, marginal, and not proficient at each proficiency level in reading and critical thinking, writing, and mathematics. A student classified as marginal is one whose test results do not provide enough evidence to classify the student either as proficient or as not proficient. See the User's Guide for more information about these classifications, including a list of the specific skills associated with each proficiency level in each skill area.

Reports based on a sample of fewer than 50 test takers are representative of the performance of **that sample only**. Reports based on **fewer than 50 test takers** should not be considered representative of the larger group of like students, and inferences or generalizations about the larger population or subgroup **should not** be made based on such small samples.

All College Student Classes

ETS® Proficiency Profile

Summary of Proficiency Classifications

To show how many students are proficient at each level

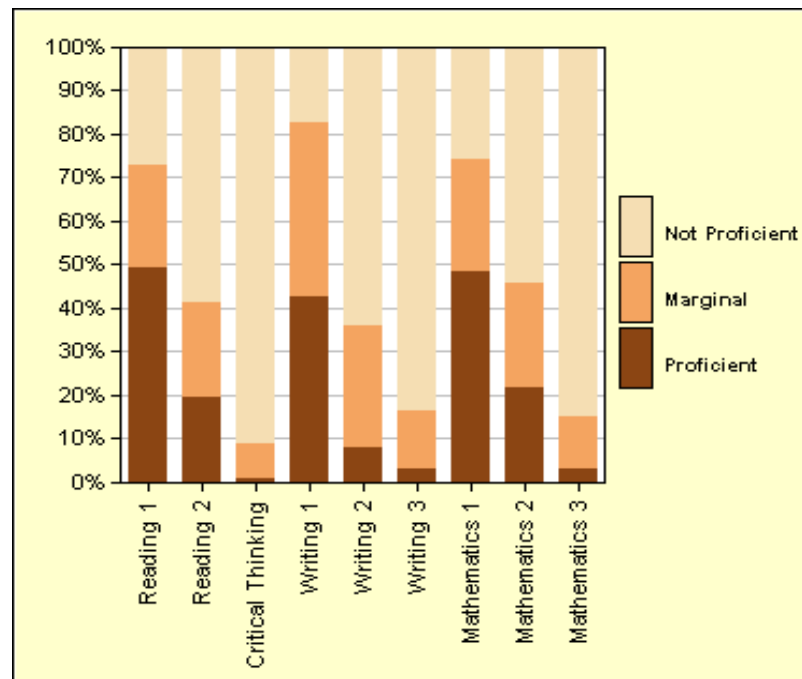
Trinity Valley Community College

Number of students tested: 237

Number of students included in these statistics: 235

Number of students excluded (see roster): 2

| Skill Dimension | Proficiency Classification | | |
|----------------------|----------------------------|----------|----------------|
| | Proficient | Marginal | Not Proficient |
| Reading, Level 1 | 49% | 23% | 27% |
| Reading, Level 2 | 20% | 22% | 59% |
| Critical Thinking | 1% | 8% | 91% |
| | | | |
| Writing, Level 1 | 43% | 40% | 17% |
| Writing, Level 2 | 8% | 28% | 64% |
| Writing, Level 3 | 3% | 14% | 83% |
| | | | |
| Mathematics, Level 1 | 49% | 26% | 26% |
| Mathematics, Level 2 | 22% | 24% | 54% |
| Mathematics, Level 3 | 3% | 12% | 85% |



The skills measured by the ETS® Proficiency Profile test are grouped into proficiency levels - three proficiency levels for writing, three for mathematics, and three for the combined set of skills involved in reading and critical thinking. The table and graph show the number and percentage of students who are proficient, marginal, and not proficient at each proficiency level in reading and critical thinking, writing, and mathematics. A student classified as marginal is one whose test results do not provide enough evidence to classify the student either as proficient or as not proficient. See the User's Guide for more information about these classifications, including a list of the specific skills associated with each proficiency level in each skill area.

Reports based on a sample of fewer than 50 test takers are representative of the performance of **that sample only**. Reports based on **fewer than 50 test takers** should not be considered representative of the larger group of like students, and inferences or generalizations about the larger population or subgroup **should not** be made based on such small samples.

High School Classes

ETS® Proficiency Profile

Summary of Proficiency Classifications
To show the ability of the group taking the test

All College Student Classes

ETS® Proficiency Profile

Summary of Proficiency Classifications
To show the ability of the group taking the test

Trinity Valley Community College**Trinity Valley Community College**

| | Fall 2015 | Spring 2016 | Difference Fall - Spring | | Fall 2015 | Spring 2016 | Difference Fall - Spring |
|-----------------------------|-------------------------------|-------------------------------|-----------------------------|-----------------------------|-------------------------------|-------------------------------|-----------------------------|
| Skill Dimension | Proficiency Classification | Proficiency Classification | | Skill Dimension | Proficiency Classification | Proficiency Classification | |
| | Proficient | Proficient | Proficient | | Proficient | Proficient | Proficient |
| Reading, Level 1 | 56% | 67% | 11% | Reading, Level 1 | 41% | 49% | 8% |
| Reading, Level 2 | 21% | 25% | 4% | Reading, Level 2 | 17% | 20% | 3% |
| Critical Thinking | 1% | 3% | 2% | Critical Thinking | 0% | 1% | 1% |
| | | | | | | | |
| Writing, Level 1 | 57% | 67% | 10% | Writing, Level 1 | 38% | 43% | 5% |
| Writing, Level 2 | 12% | 20% | 8% | Writing, Level 2 | 6% | 8% | 2% |
| Writing, Level 3 | 4% | 11% | 7% | Writing, Level 3 | 2% | 3% | 1% |
| | | | | | | | |
| Mathematics, Level 1 | 63% | 66% | 3% | Mathematics, Level 1 | 32% | 49% | 17% |
| Mathematics, Level 2 | 21% | 25% | 4% | Mathematics, Level 2 | 10% | 22% | 12% |
| Mathematics, Level 3 | 6% | 1% | -5% | Mathematics, Level 3 | 3% | 3% | 0% |

High School Versus College

| | HS Mean Score | College Mean Score | Difference | HS/College |
|--------------------------|---------------|--------------------|------------|------------|
| Total Score | 446.41 | 436.71 | 9.7 | 102.2% |
| Skills Subscores: | | | | |
| Critical Thinking | 111.76 | 109.13 | 2.63 | 102.4% |
| Reading | 118.3 | 115.45 | 2.85 | 102.5% |
| Writing | 114.85 | 112.49 | 2.36 | 102.1% |
| Mathematics | 113.86 | 112.46 | 1.4 | 101.2% |
| Context-Based | | | | |
| Humanities | 113.85 | 111.51 | 2.34 | 102.1% |
| Social Sciences | 113.2 | 111.62 | 1.58 | 101.4% |
| Natural Sciences | 116.13 | 113.48 | 2.65 | 102.3% |

| Skill Dimension | High School | | | College | | | HS-College Proficiency Difference |
|-----------------------------|----------------------------|----------|----------------|----------------------------|----------|----------------|-----------------------------------|
| | Proficiency Classification | | | Proficiency Classification | | | |
| | Proficient | Marginal | Not Proficient | Proficient | Marginal | Not Proficient | |
| Reading, Level 1 | 67% | 22% | 12% | 49% | 23% | 27% | 18% |
| Reading, Level 2 | 25% | 34% | 41% | 20% | 22% | 59% | 5% |
| Critical Thinking | 3% | 15% | 82% | 1% | 8% | 91% | 2% |
| | | | | | | | |
| Writing, Level 1 | 67% | 24% | 10% | 43% | 40% | 17% | 24% |
| Writing, Level 2 | 20% | 44% | 35% | 8% | 28% | 64% | 12% |
| Writing, Level 3 | 11% | 23% | 67% | 3% | 14% | 83% | 8% |
| | | | | | | | |
| Mathematics, Level 1 | 66% | 19% | 15% | 49% | 26% | 26% | 17% |
| Mathematics, Level 2 | 25% | 38% | 38% | 22% | 24% | 54% | 3% |
| Mathematics, Level 3 | 1% | 16% | 83% | 3% | 12% | 85% | -2% |

Face to Face Classes

ETS® Proficiency Profile

Summary of Scaled Scores

To show the ability of the group taking the test

Trinity Valley Community College

Number of students tested: 310

Number of students included in these statistics: 310

Number of students excluded (see roster): 0

| | Possible Range | Mean Score | 95% Confidence Limits* for Mean | Standard Deviation | 25th Percentile | 50th Percentile | 75th Percentile |
|---------------------------------|----------------|------------|---------------------------------|--------------------|-----------------|-----------------|-----------------|
| Total Score | 400 to 500 | 439.7 | 438 to 441 | 18.05 | 424 | 439 | 452 |
| Skills Subscores: | | | | | | | |
| Critical Thinking | 100 to 130 | 109.9 | 109 to 111 | 5.56 | 106 | 110 | 113 |
| Reading | 100 to 130 | 116.32 | 115 to 117 | 7.11 | 110 | 116 | 123 |
| Writing | 100 to 130 | 113.23 | 112 to 114 | 5.04 | 110 | 113 | 116 |
| Mathematics | 100 to 130 | 112.91 | 112 to 114 | 5.14 | 109 | 113 | 116 |
| Context-Based Subscores: | | | | | | | |
| Humanities | 100 to 130 | 112.09 | 111 to 113 | 6.64 | 107 | 111 | 115 |
| Social Sciences | 100 to 130 | 112.13 | 111 to 113 | 5.75 | 106 | 113 | 118 |
| Natural Sciences | 100 to 130 | 114.23 | 113 to 115 | 5.87 | 109 | 114 | 119 |

*The confidence limits are based on the assumption that the questions contributing to each scaled score are a sample from a much larger set of possible questions that could have been used to measure those same skills. If the group of students taking the test is a sample from some larger population of students eligible to be tested, the confidence limits include both sampling of students and sampling of questions as factors that could cause the mean score to vary. The confidence limits indicate the precision of the mean score of the students actually tested, as an estimate of the "true population mean" - the mean score that would result if all the students in the population could somehow be tested with all possible questions. These confidence limits were computed by a procedure that has a 95 percent probability of producing upper and lower limits that will surround the true population mean. The population size used in the calculation of the confidence limits for the mean scores in this report is 310.

Reports based on a sample of fewer than 50 test takers are representative of the performance of **that sample only**. Reports based on **fewer than 50 test takers** should not be considered representative of the larger group of like students, and inferences or generalizations about the larger population or subgroup **should not** be made based on such small samples.

Distance Classes
ETS® Proficiency Profile

Not enough students to get full report

| | |
|---------|--------|
| Average | 432.65 |
| Minimum | 401.00 |
| Maximum | 486.00 |