

# 2013 TVCC CCSSE RESULTS

WITH PREVIOUS YEAR COMPARISON INFORMATION

# SYNOPSIS

TVCC as a whole, and all individual campuses showed improvement over 2011 results

In rollups of items in 5 benchmark areas TVCC scored higher than the mid sized college or national average on 3.

- Results are weighted on a 0-100 scale and presented in a table on the following page.

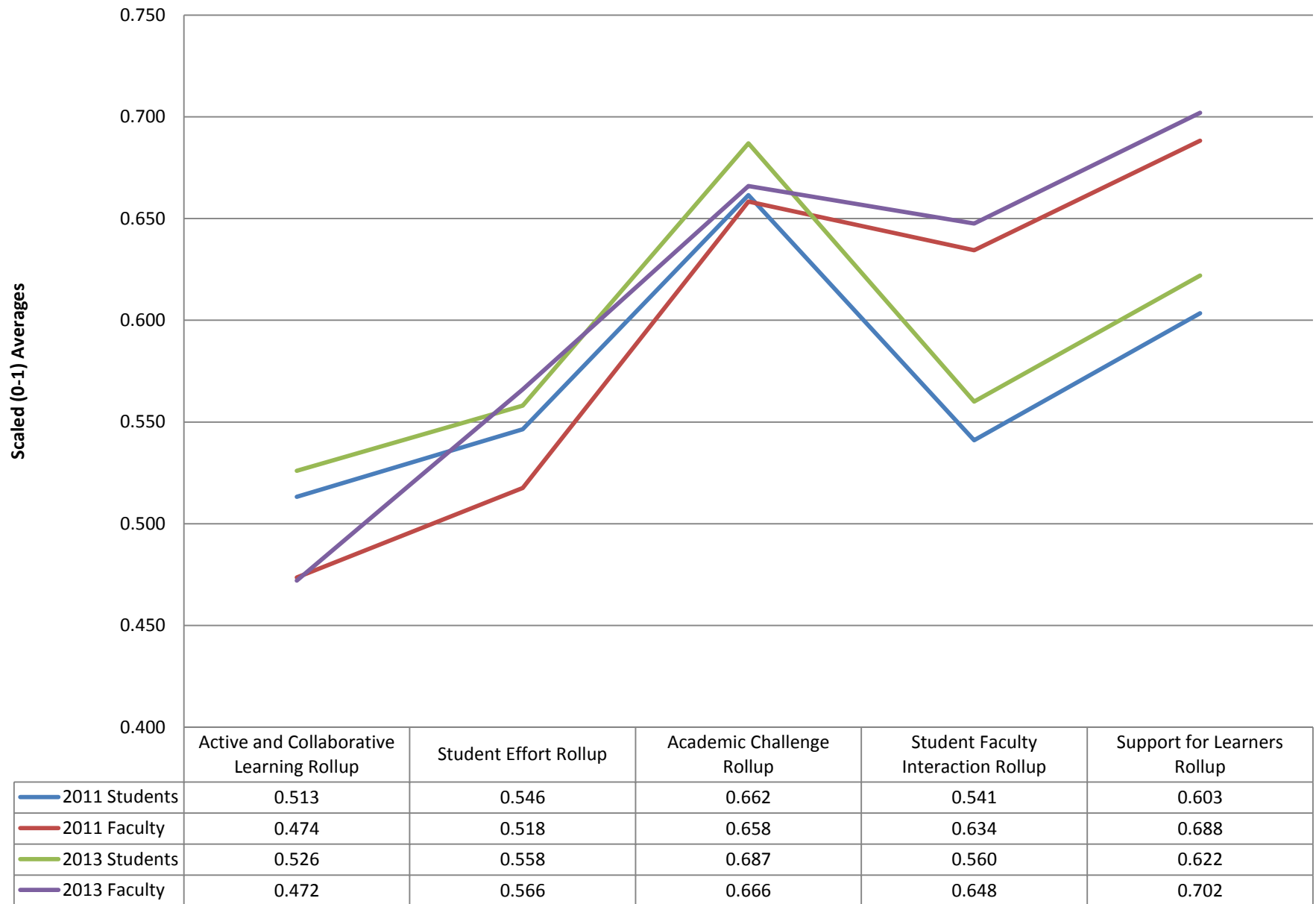
# TOP LEVEL BENCHMARK RESULTS

Benchmark Area	TVCC Score	Mid Sized Colleges	National Cohort
Active and Collaborative Learning	48.2	49.7	50.0
Student Effort	50.9	50.0	50.0
Academic Challenge	51.4	49.8	50.0
Student-Faculty Interaction	48.4	50.1	50.0
Support for Learners	53.5	50.0	50.0

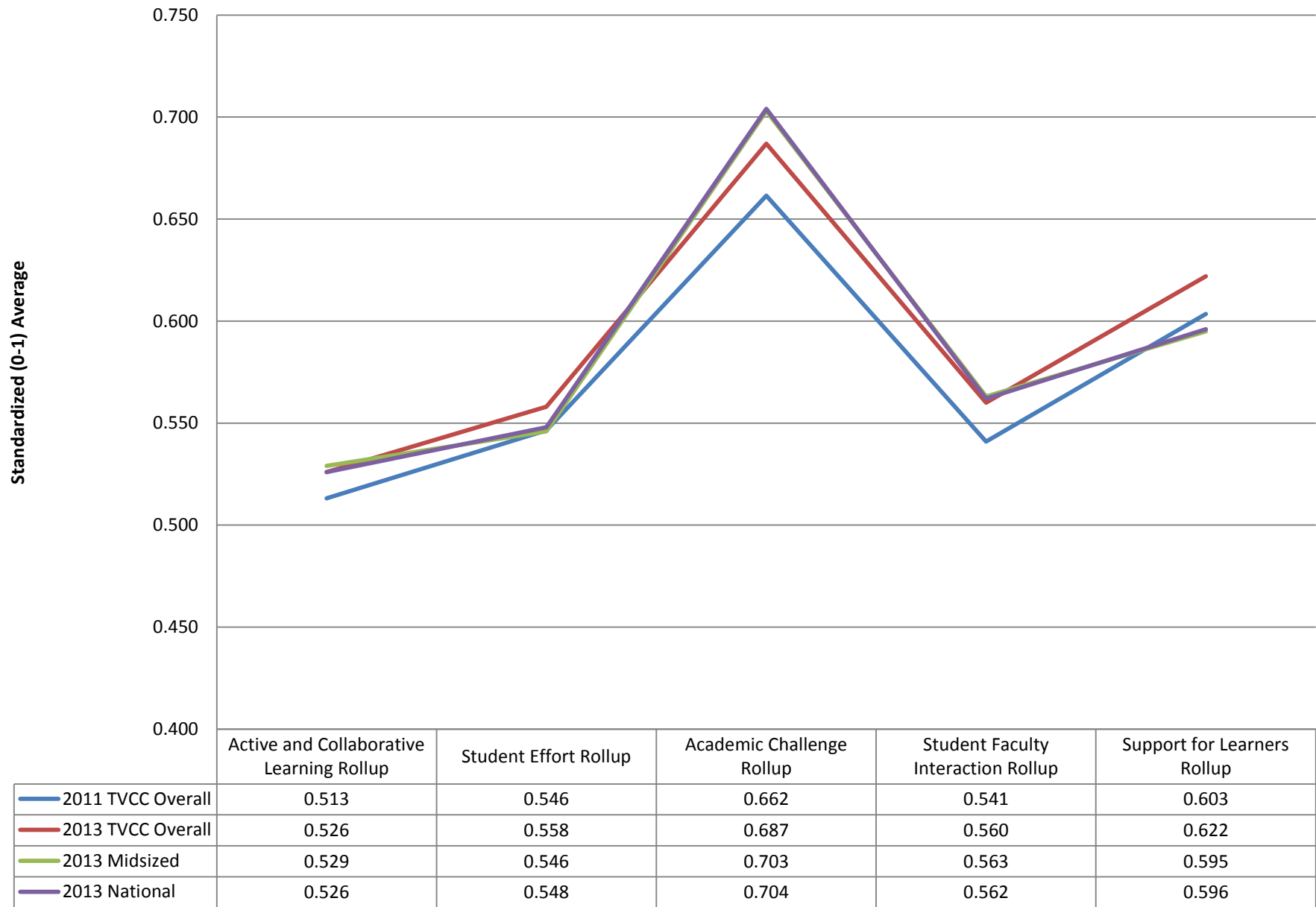
# CHART AND TABLE DATA

- The following series of charts and Tables compare:
  - Faculty to Student perception of student engagement
  - TVCC to national and midsize colleges
  - Comparison of TVCC Campuses
  - Individual campus 2013 to 2011 results (No Kaufman results for 2011)
  - TVCC individual benchmark items to midsize colleges for 5 CCSSE administrations
  - TVCC individual benchmark items to the national cohort for 5 CCSSE administrations

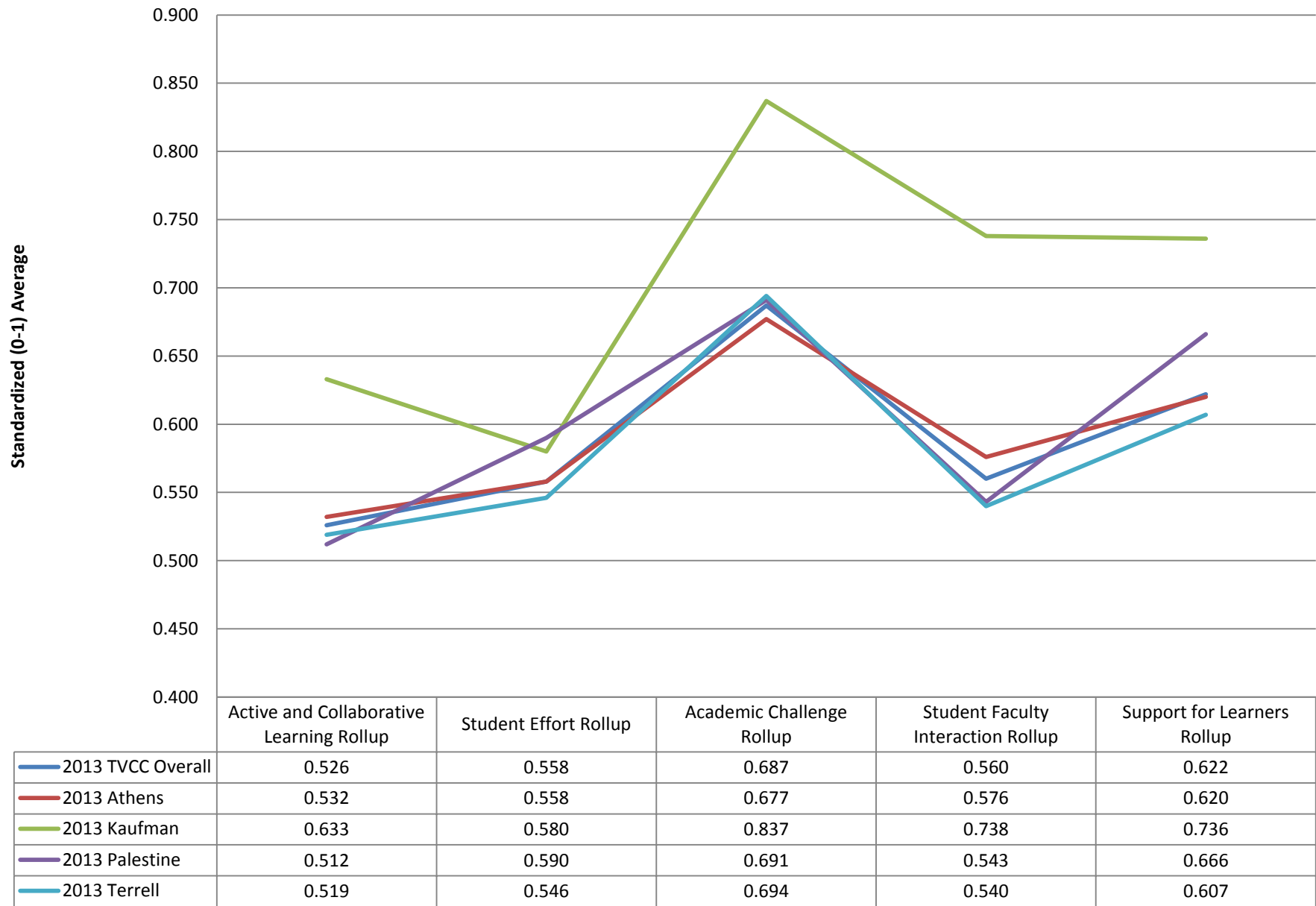
## 2011-2013 CCSSE Benchmark Faculty-Student Comparison



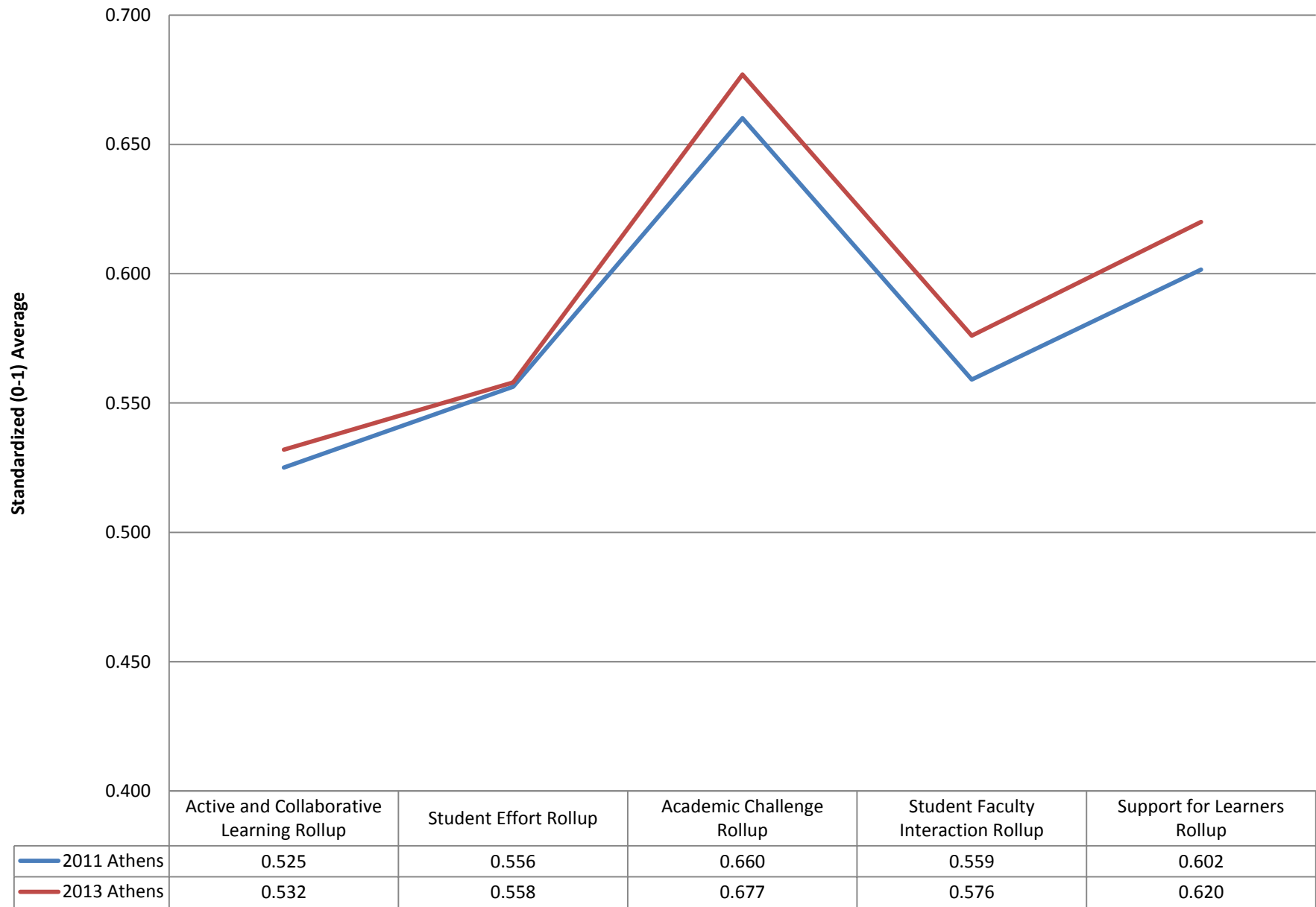
## TVCC 2011-2013 CCSSE Benchmark Comparison



## 2013 TVCC CCSSE Benchmark Campus Comparison

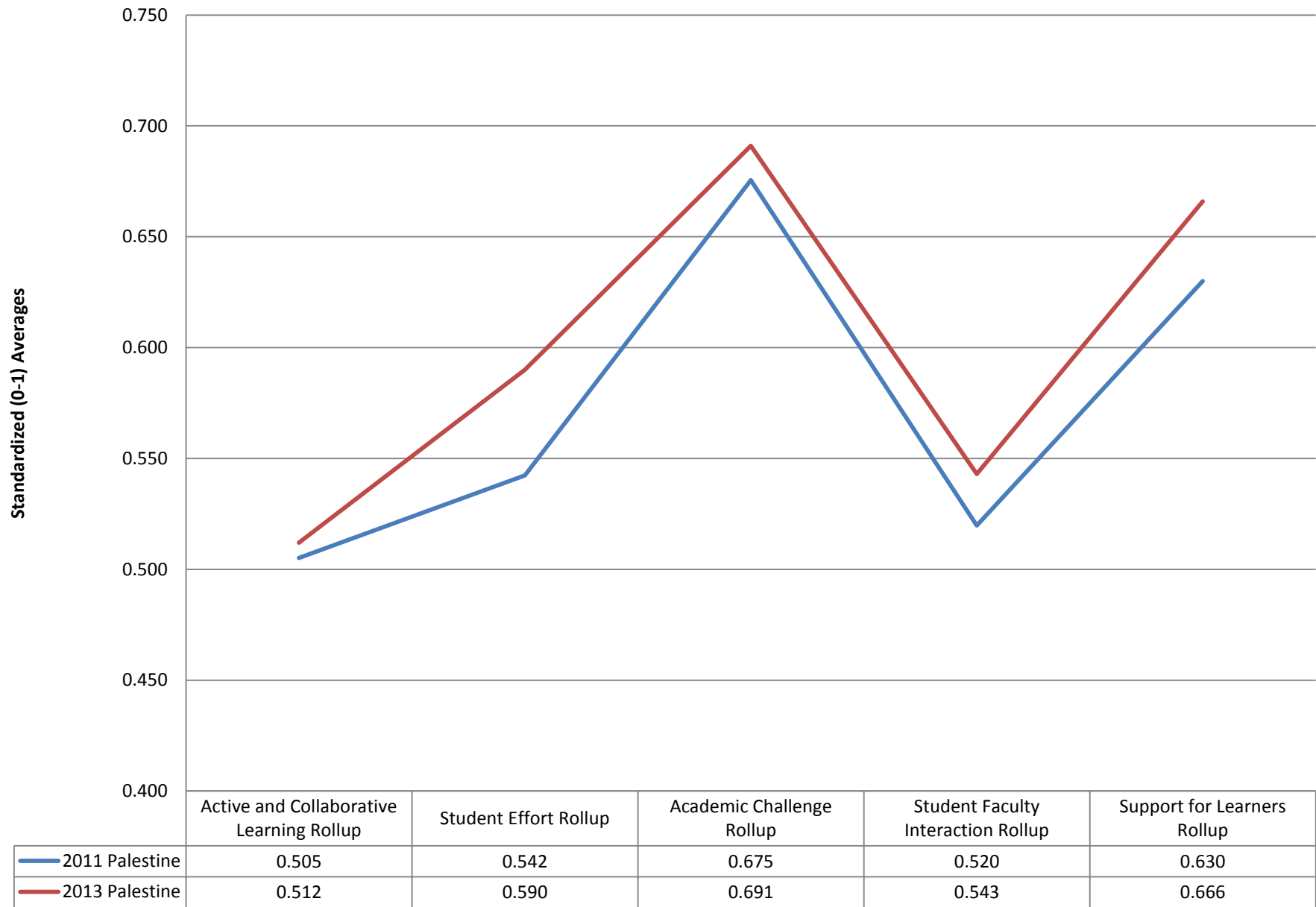


## 2011-2013 CCSSE Benchmark Comparison for Athens Campus

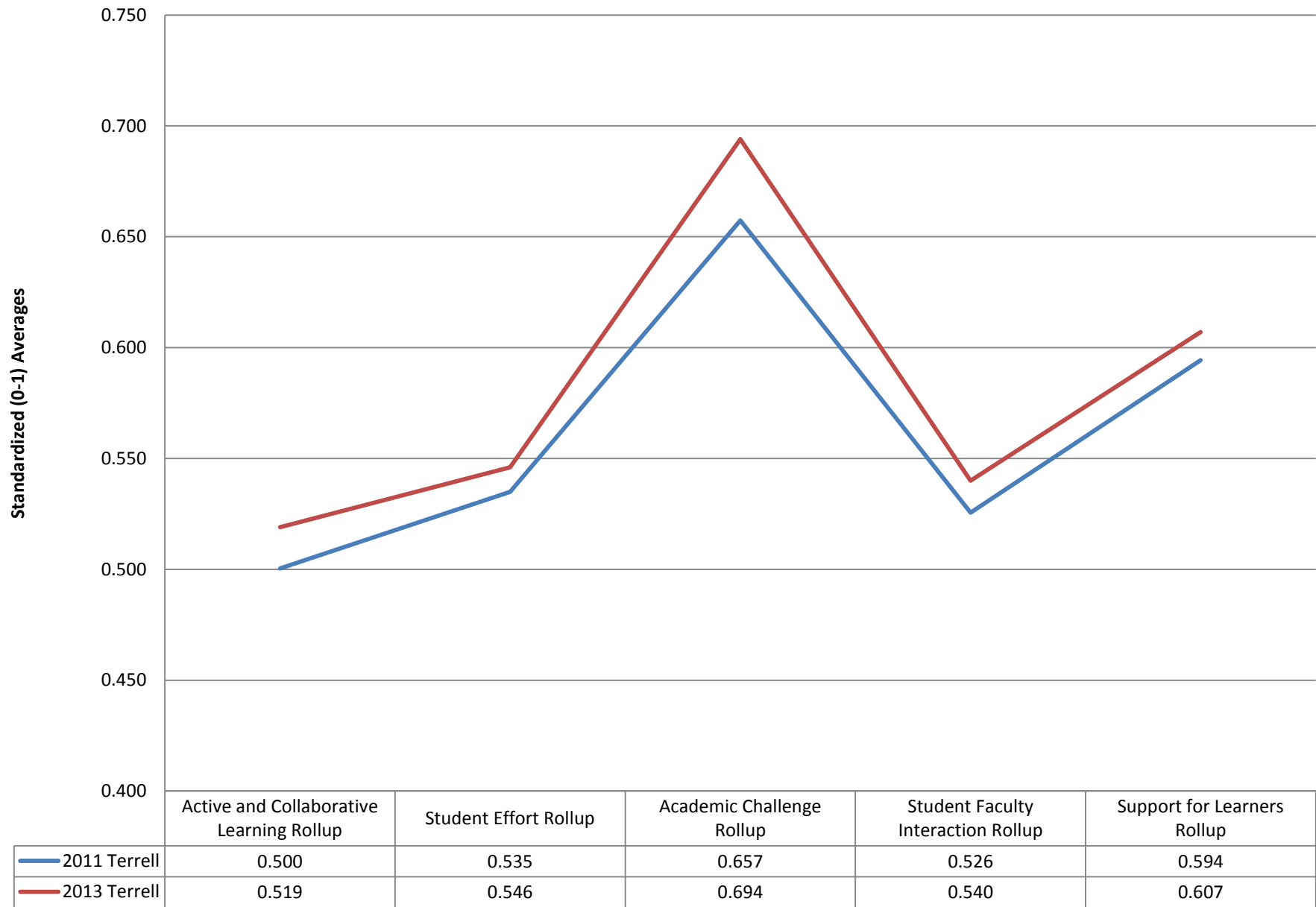




## 2011-2013 CCSSE Benchmark Comparison for Palestine Campus



## 2011-2013 CCSSE Benchmark Comparison for the Terrell Campus



## Comparison of TVCC to Mid-Sized College Average Responses for Benchmark Related CCSSE Survey Items

Legend:			Significantly Lower	Lower	Even	Higher	Significantly Higher
Item#	Description	CCSSE Code	ALL TVCC				
			2005	2007	2009	2011	2013
Active and Collaborative Learning							
4a	Asked questions in class or contributed to class discussions (ACTCOL)	CLQUEST					
4b	Made a class presentation (ACTCOL)	CLPRESEN					
4f	Worked with other students on projects during class (ACTCOL)	CLASSGRP					
4g	Worked with classmates outside of class to prepare class assignments (ACTCOL)	OCCGRP					
4h	Tutored or taught other students (paid or voluntary) (ACTCOL)	TUTOR					
4i	Participated in a community-based project as a part of a regular course (ACTCOL)	COMMPROJ					
4r	Discussed ideas from your readings or classes with others outside of class (students, family members, co-workers, etc.) (ACTCOL)	OOCIDEAS					
Student Effort							
4c	Prepared two or more drafts of a paper or assignment before turning it in (STUEFF)	REWROPAP					
4d	Worked on a paper or project that required integrating ideas or information from various sources (STUEFF)	INTEGRAT					
4e	Came to class without completing readings or assignments (STUEFF)	CLUNPREP					
13.1d	Frequency: Peer or other tutoring (STUEFF)	USETUTOR					
13.1e	Frequency: Skill labs (writing, math, etc.) (STUEFF)	USELAB					
13.1h	Frequency: Computer lab (STUEFF)	USECOMLB					
6b	Number of books read on your own (not assigned) for personal enjoyment or academic enrichment (STUEFF)	READOWN					
10a	Preparing for class (studying, reading, writing, rehearsing, doing homework, or other activites related to your program) (STUEFF)	ACADPR01					
Academic Challenge							
4p	Worked harder than you thought you could to meet an instructor's standards or expectations (ACCHALL)	WORKHARD					
5b	Analyzing the basic elements of an idea, experience, or theory (ACCHALL)	ANALYZE					
5c	Synthesizing and organizing ideas, information, or experiences in new ways (ACCHALL)	SYNTHESZ					
5d	Making judgments about the value or soundness of information, arguments, or methods (ACCHALL)	EVALUATE					
5e	Applying theories or concepts to practical problems or in new situations (ACCHALL)	APPLYING					
5f	Using information you have read or heard to perform a new skill (ACCHALL)	PERFORM					
6a	Number of assigned textbooks, manuals, books, or book-length packs of course readings (ACCHALL)	READASGN					
6c	Number of written papers or reports of any length (ACCHALL)	WRITEANY					
7	Mark the box that best represents the extent to which your examinations during the current school year have challenged you to do your best work at this college (ACCHALL)	EXAMS					
9a	Encouraging you to spend significant amounts of time studying (ACCHALL)	ENVSCHOL					
Student Faculty Interaction							
4k	Used email to communicate with an instructor (STUFAC)	EMAIL					
4l	Discussed grades or assignments with an instructor (STUFAC)	FACGRADE					
4m	Talked about career plans with an instructor or advisor (STUFAC)	FACPLANS					
4n	Discussed ideas from your readings or classes with instructors outside of class (STUFAC)	FACIDEAS					
4o	Received prompt feedback (written or oral) from instructors on your performance (STUFAC)	FACFEED					
4q	Worked with instructors on activities other than coursework (STUFAC)	FACOTH					
Support for Learners							

## Comparison of TVCC to Mid-Sized College Average Responses for Benchmark Related CCSSE Survey Items

Legend:			Significantly Lower	Lower	Even	Higher	Significantly Higher
Item#	Description	CCSSE Code	ALL TVCC				
			2005	2007	2009	2011	2013
9b	Providing the support you need to help you succeed at this college (SUPPORT)	ENVSUPRT					
9c	Encouraging contact among students from different economic, social, and racial or ethnic backgrounds (SUPPORT)	ENVDIVRS					
9d	Helping you cope with your non-academic responsibilities (work, family, etc.) (SUPPORT)	ENVNACAD					
9e	Providing the support you need to thrive socially (SUPPORT)	ENVSOCAL					
9f	Providing the financial support you need to afford your education (SUPPORT)	FINSUPP					
13.1a	Frequency: Academic advising/planning (SUPPORT)	USEACAD					
13.1b	Frequency: Career counseling (SUPPORT)	USECACOU					

## Comparison of TVCC to National Average Responses for Benchmark Related CCSSE Survey Items (2005 -

Legend:			Significantly Lower	Lower	Even	Higher	Significantly Higher
Item#	Description	CCSSE Code	ALL TVCC				
			2005	2007	2009	2011	2013
Active and Collaborative Learning							
4a	Asked questions in class or contributed to class discussions (ACTCOL)	CLQUEST					
4b	Made a class presentation (ACTCOL)	CLPRESEN					
4f	Worked with other students on projects during class (ACTCOL)	CLASSGRP					
4g	Worked with classmates outside of class to prepare class assignments (ACTCOL)	OCCGRP					
4h	Tutored or taught other students (paid or voluntary) (ACTCOL)	TUTOR					
4i	Participated in a community-based project as a part of a regular course (ACTCOL)	COMMPROJ					
4r	Discussed ideas from your readings or classes with others outside of class (students, family members, co-workers, etc.) (ACTCOL)	OOCIDEAS					
Student Effort							
4c	Prepared two or more drafts of a paper or assignment before turning it in (STUEFF)	REWROPAP					
4d	Worked on a paper or project that required integrating ideas or information from various sources (STUEFF)	INTEGRAT					
4e	Came to class without completing readings or assignments (STUEFF)	CLUNPREP					
13.1d	Frequency: Peer or other tutoring (STUEFF)	USESTUTOR					
13.1e	Frequency: Skill labs (writing, math, etc.) (STUEFF)	USELAB					
13.1h	Frequency: Computer lab (STUEFF)	USECOMLB					
6b	Number of books read on your own (not assigned) for personal enjoyment or academic enrichment (STUEFF)	READOWN					
10a	Preparing for class (studying, reading, writing, rehearsing, doing homework, or other activites related to your program) (STUEFF)	ACADPR01					
Academic Challenge							
4p	Worked harder than you thought you could to meet an instructor's standards or expectations (ACCHALL)	WORKHARD					
5b	Analyzing the basic elements of an idea, experience, or theory (ACCHALL)	ANALYZE					
5c	Synthesizing and organizing ideas, information, or experiences in new ways (ACCHALL)	SYNTHESE					
5d	Making judgments about the value or soundness of information, arguments, or methods (ACCHALL)	EVALUATE					
5e	Applying theories or concepts to practical problems or in new situations (ACCHALL)	APPLYING					
5f	Using information you have read or heard to perform a new skill (ACCHALL)	PERFORM					
6a	Number of assigned textbooks, manuals, books, or book-length packs of course readings (ACCHALL)	READASGN					
6c	Number of written papers or reports of any length (ACCHALL)	WRITEANY					
7	Mark the box that best represents the extent to which your examinations during the current school year have challenged you to do your best work at this college (ACCHALL)	EXAMS					
9a	Encouraging you to spend significant amounts of time studying (ACCHALL)	ENVSCHOL					
Student Faculty Interaction							
4k	Used email to communicate with an instructor (STUFAC)	EMAIL					
4l	Discussed grades or assignments with an instructor (STUFAC)	FACGRADE					
4m	Talked about career plans with an instructor or advisor (STUFAC)	FACPLANS					
4n	Discussed ideas from your readings or classes with instructors outside of class (STUFAC)	FACIDEAS					
4o	Received prompt feedback (written or oral) from instructors on your performance (STUFAC)	FACFEED					
4q	Worked with instructors on activities other than coursework (STUFAC)	FACOTH					
Support for Learners							

## Comparison of TVCC to National Average Responses for Benchmark Related CCSSE Survey Items (2005 -

Legend:			Significantly Lower	Lower	Even	Higher	Significantly Higher
Item#	Description	CCSSE Code	ALL TVCC				
			2005	2007	2009	2011	2013
9b	Providing the support you need to help you succeed at this college (SUPPORT)	ENVSUPRT					
9c	Encouraging contact among students from different economic, social, and racial or ethnic backgrounds (SUPPORT)	ENVDIVRS					
9d	Helping you cope with your non-academic responsibilities (work, family, etc.) (SUPPORT)	ENVNACAD					
9e	Providing the support you need to thrive socially (SUPPORT)	ENVSOCAL					
9f	Providing the financial support you need to afford your education (SUPPORT)	FINSUPP					
13.1a	Frequency: Academic advising/planning (SUPPORT)	USEACAD					
13.1b	Frequency: Career counseling (SUPPORT)	USECACOU					