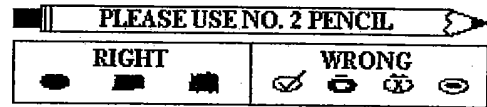


Career Day Evaluation for Adults

Trinity Valley Community College

Spring 2001

Your answers to the following statements are important to us. They will help us make next year's Career Day even better. Please mark each bubble carefully with a Number 2 pencil. Do not write in the margins.



Your Position:

- Visiting Counselor/Administrator/Teacher
- TVCC Instructor (faculty)
- TVCC Staff (administrator, secretarial, etc.)
- TVCC Student Assistant (Student Senate, cheerleader, or cardette, etc.)

I attended or worked the (list all that apply):

- General Assembly
- Counselor's Reception
- All-College General Information Session
- Men's Gym--Student luncheon
- Counselor's luncheon

Please indicate your satisfaction with the activities you attended:

Wild Card Jazz

- Outstanding
- Good
- Fair
- Acceptable
- Unacceptable

Cardinal Singers

- Outstanding
- Good
- Fair
- Acceptable
- Unacceptable

Cheerleaders

- Outstanding
- Good
- Fair
- Acceptable
- Unacceptable

Cardettes

- Outstanding
- Good
- Fair
- Acceptable
- Unacceptable

General Assembly

- Outstanding
- Good
- Fair
- Acceptable
- Unacceptable

Gen. Info. Session

- Outstanding
- Good
- Fair
- Acceptable
- Unacceptable

Crimson Company

- Outstanding
- Good
- Fair
- Acceptable
- Unacceptable

Overall Impression

- Outstanding
- Good
- Fair
- Acceptable
- Unacceptable

Please share with us any strengths or weaknesses you observed while participating in Career Day.

Strengths: _____

Weaknesses: _____

Additional comments that will help us improve Career Day: _____

Thank you for your cooperation.

(Rev. 3-2001)

Survey Item Analysis

Career Day Student Evaluation 2000

Overall General Assembly

	Choice	Count	Percent
1	Outstanding	84	16%
2	Good	281	55%
3	Fair	116	23%
4	Acceptable	23	4%
5	Unacceptable	8	2%
	Multi-Marked	0	0%
	Mean	2.20	

Cardinal Singers

	Choice	Count	Percent
1	Outstanding	49	10%
2	Good	160	31%
3	Fair	168	33%
4	Acceptable	81	16%
5	Unacceptable	50	10%
	Multi-Marked	0	0%
	Mean	2.85	

Wild Card Jazz

	Choice	Count	Percent
1	Outstanding	99	20%
2	Good	237	47%
3	Fair	112	22%
4	Acceptable	32	6%
5	Unacceptable	23	5%
	Multi-Marked	1	0%
	Mean	2.29	

Cardettes

	Choice	Count	Percent
1	Outstanding	126	25%
2	Good	234	46%
3	Fair	105	21%
4	Acceptable	28	6%
5	Unacceptable	15	3%
	Multi-Marked	0	0%
	Mean	2.16	

Career Sessions

	Choice	Count	Percent
1	Outstanding	116	24%
2	Good	241	49%
3	Fair	94	19%
4	Acceptable	25	5%
5	Unacceptable	14	3%
	Multi-Marked	0	0%
	Mean	2.14	

Survey Item Analysis

Overall Impression

Choice		Count	Percent
1	Outstanding		
2	Good	93	21%
3	Fair	248	57%
4	Acceptable	68	16%
5	Unacceptable	16	4%
Multi-Marked		8	2%
Mean		0	0%
		2.07	

Browsing Session

Choice		Count	Percent
1	Outstanding		
2	Good	69	16%
3	Fair	228	54%
4	Acceptable	103	24%
5	Unacceptable	16	4%
Multi-Marked		10	2%
Mean		0	0%
		2.23	

Cheerleaders

Choice		Count	Percent
1	Outstanding		
2	Good	262	51%
3	Fair	191	37%
4	Acceptable	45	9%
5	Unacceptable	10	2%
Multi-Marked		6	1%
Mean		0	0%
		1.65	

Crimson Company

Choice		Count	Percent
1	Outstanding		
2	Good	48	12%
3	Fair	203	51%
4	Acceptable	104	26%
5	Unacceptable	21	5%
Multi-Marked		20	5%
Mean		0	0%
		2.40	

Survey Item Analysis

Men's Gym--Student luncheon

	Choice	Count	Percent
1	Men's Gym Student luncheon	1	100%

Counselor's luncheon

	Choice	Count	Percent
1	Counselor's luncheon	9	100%

Cheerleaders

	Choice	Count	Percent
1	Outstanding	4	36%
2	Good	6	55%
3	Fair	0	0%
4	Acceptable	1	9%
5	Unacceptable	0	0%
	Multi-Marked	0	0%
	Mean	1.82	

Crimson Company

	Choice	Count	Percent
1	Outstanding	0	0%
2	Good	5	100%
3	Fair	0	0%
4	Acceptable	0	0%
5	Unacceptable	0	0%
	Multi-Marked	0	0%
	Mean	2.00	

Survey Item Analysis

TVCC Career Day Evaluation by Adults 2000

Cardinal Singers

	Choice	Count	Percent
1	Outstanding	3	30%
2	Good	5	50%
3	Fair	1	10%
4	Acceptable	0	0%
5	Unacceptable	1	10%
	Multi-Marked	0	0%
	Mean	2.10	

Cardettes

	Choice	Count	Percent
1	Outstanding	4	36%
2	Good	6	55%
3	Fair	1	9%
4	Acceptable	0	0%
5	Unacceptable	0	0%
	Multi-Marked	0	0%
	Mean	1.73	

I attended or worked the (list all that apply):

	Choice	Count	Percent
1	General Assembly	9	100%

Overall Impression

	Choice	Count	Percent
1	Outstanding	2	18%
2	Good	9	82%
3	Fair	0	0%
4	Acceptable	0	0%
5	Unacceptable	0	0%
	Multi-Marked	0	0%
	Mean	1.82	